

Quick Start – LogPlot8, Single License

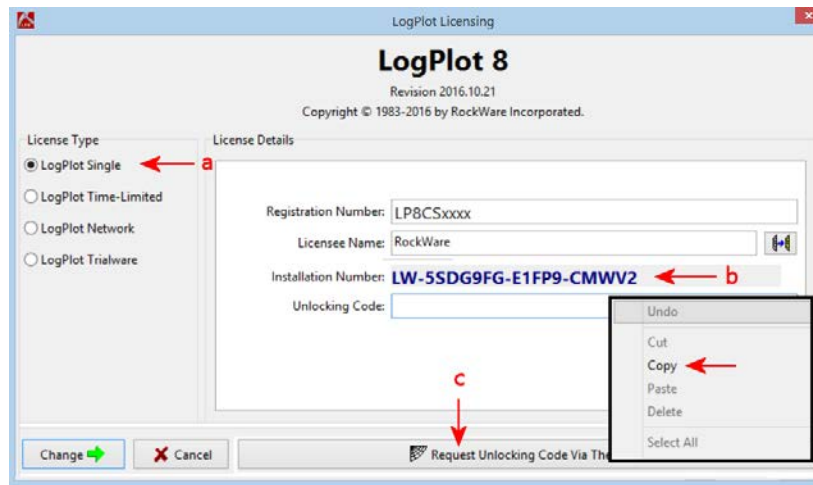
Installing LogPlot8

You must have **Administrator** privileges to **install and license** LogPlot8. The program installs as a "Trial" version which can be unlocked to turn off the trial's day/use counter.

1. Visit www.rockware.com and click on the **Downloads | Demo** menu item, along the top of the page.
2. Scroll down to the **LogPlot8** item and click the small **Download** link below it.
3. On the next screen, fill in your **name** and **email**, and the **captcha** code, and click **Submit**.
4. Scroll down to the **LogPlot8** heading and click the small **Download** link below it.
5. If prompted, choose **Save** to save the installation program to your computer.
6. When the download is complete, **double-click** on the installation file, "LogPlot8_installation.exe" to start the installation. Follow the recommended installation settings.

Licensing LogPlot8

1. When installation is complete, start the program. The main LogPlot window will be displayed.
2. To set up the licensing at this time, click the **Help** menu and select **Change Licensing**.
3. In the **LogPlot Licensing window**, do this:
 - a. **License Type:** On the left side of the window, choose **LogPlot Single**.
 - b. **Installation Number:** **Right-click** on this long set of numbers and letters and choose **Copy**. We will use this to calculate your unique unlocking code.
 - c. **Request Unlocking Code via the Web:** Click this button and you will be delivered to RockWare's web registration page. Supply your **Registration Number** (issued at time of purchase, it looks something like "LP8CSxxxx"), the **Installation Number** and your **contact information**. We'll reply within one business day via email with the unlocking code. (If there's a time lag until you receive the unlocking code, you can use the program fully-functionally in trial mode.)



4. **Unlock the program:** When you receive your unlocking code from RockWare, start LogPlot. Click **Help | Change Licensing**, and fill in the prompts – **Registration Number**, **Licensee Name** (your name or company name), and **Unlocking Code**.
5. Click the **Change** button. The licensing status will be displayed in the title bar at the top of the program window.

Getting Help

- Run through the **Tutorial** lessons: Click the **Help | Contents** menu and the Help system will load into your browser. On the Welcome page, click **Tutorial Lessons**.
- Click on the **Help** button in the program options windows: In your browser you will see the help topic specific to that option.
- Join the online **support forum** where users post questions and answers: Visit www.rockware.com, click **Support | Support Forums**.
- Contact our **technical support staff** at 303-278-3534, or email us at tech@rockware.com.